

“The Second Section”
Monticello Railway Museum
P.O. Box 401
Monticello IL 61856

**MONTICELLO
RAILWAY
MUSEUM;
Where “I’ve Been
Working on the
Railroad” Becomes
a Reality**

THE SECOND SECTION

2020
JULY - AUGUST
Vol. 23 No.03

Newsletter **publication** of the *Monticello Railway Museum*.

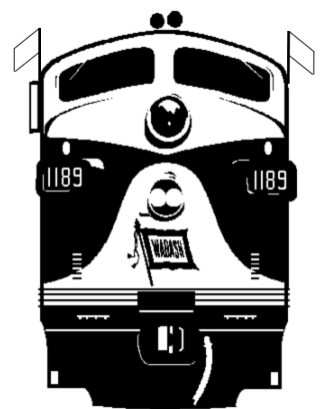
Published 4 times per year.

Send news items to the editor, Dale Jenkins, at

dalejenkins@sbcglobal.net

Internet Home Page: <http://www.mrym.org>

Museum E-Mail: info@mrym.org



OPERATIONAL SEASON QUESTIONABLE

Due to the current covid-19 crisis, the consideration of an operating season is very limited. The government restrictions and time involved will become a determining factor of either a very short operating season or none. The availability of the traveler to visit our museum is of course a primary factor. *No show-no go!* The museum will keep you advised through both this publication and on-line social media. However, the museum still remains open for those whom what to come out and contribute time towards ongoing projects that does not shut down.

ROUNDHOUSE LEAD SWITCH INSTALLED



Dan Frye is replacing ties in the new switch for the Roundhouse Lead Track in front of the Nelson Crossing Depot. In addition, his counterpart, Tom Hatchard has replaced 197 ties on the IT main. The two museum members have done an incredible job of track maintenance for a two-man section crew!!

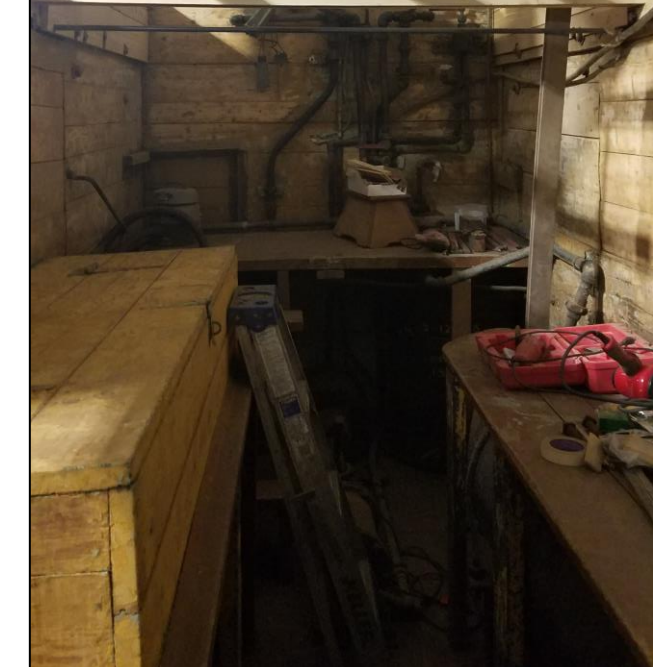
R I COACH UNDERGOING RESTORATION



Rock Island 2541 coach is undergoing an extensive interior restoration with the removal of the seats and windows. The ceiling is being replaced and the floor being renovated. The windows have been removed for minor repairs and rehabilitation to open better.



REHABILITATION OF SNOW PLOW CONTIUNES



E-8 UNIT PROGRESSING IN RESTORATION



Side body panels are being installed on the engineer side of the unit and a brand new Mars light has been installed.



HORIZONTAL BORING MILL UPGRADED



Member Scott Wetter is in the process of improving the mechanical functions of this 1913 Lucas Model 31 Horizontal Boring Mill. With tools of this type, major work can be accomplished in the restoration of equipment.

DRAINAGE PIPE INSTALLED



An eighteen-inch diameter drainage pipe has been installed from the area of the proposed roundhouse, eastward across the field to a tributary that drains into Camp Creek. A deep cut had to be made across the field.

HAVE A SAFE DAY!!